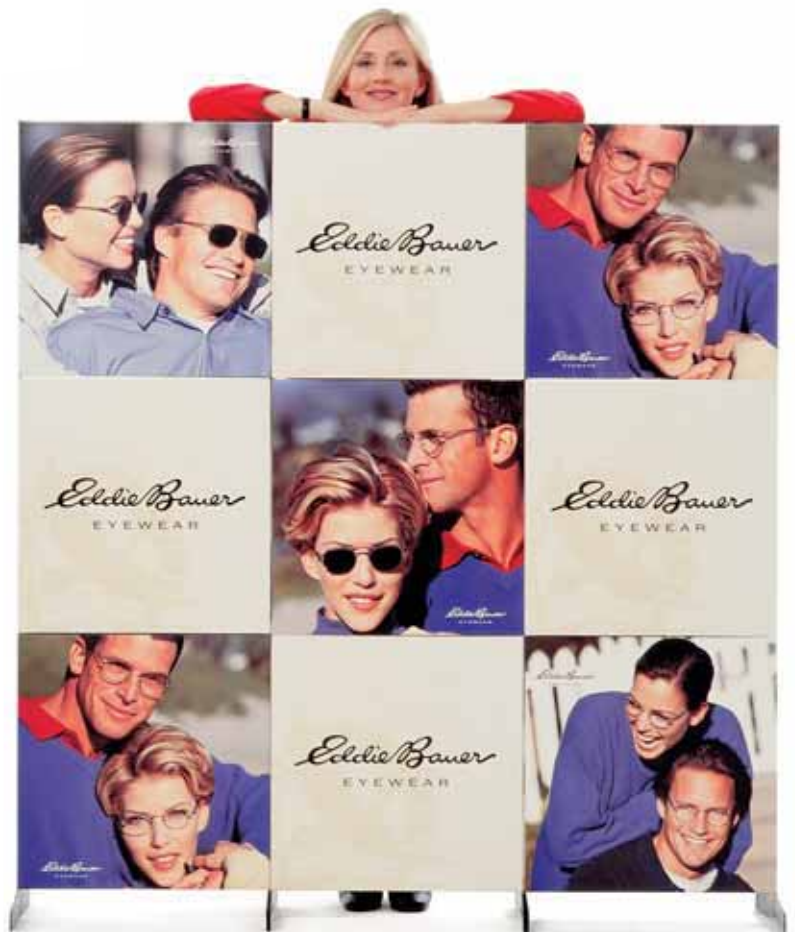


ADBOX®

Many Configurations. One Powerful Display.

Make a mural. Suspend it. Create a countertop product display. Adbox can handle it. With brilliant graphics printed on high-grade e-flute, Adbox is incredibly lightweight and comes flat packed. It's eco-friendly and makes a big impact on your audience but not the environment.

From the simplest ledge display to a full mural backdrop, Adbox has your needs covered. Not sure who's watching your back? With double-sided graphics, Adbox makes good impressions all around.



SPECIFICATIONS

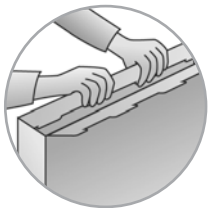
ADBOX® is still probably the most innovative P-O-P display solution available. A combination of high quality printed boxes along with a flexible connector system offers you a multitude of sizes and configurations - from countertop to wall-size promotions. They're extremely lightweight, and set up fast and easy, no tools required.

The configuration on the opposite side is shown below in parts to describe the principle.



Adbox ships flat. 9 pcs. of flat boxes with all the feet and connectors fit in a 3.5" high carton box, and folded up at time of assembly.

- 1** Fold the two flaps toward each other to interlock.
- 2** Insert the "feet" into the bottom of one of the boxes.
- 3** Insert double tab "feet" into bottom of both boxes.



box with image



A T-shaped single "feet"



B T-shaped double "feet"

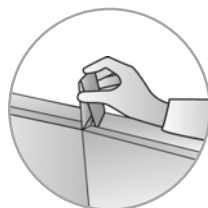
- 4** Insert rectangular connectors into the top of the standing box.
- 5** Insert 4-tab connectors to attach boxes side by side.
- 6** Use top connectors to keep boxes aligned at the top.



C rectangular single connector



D 4-tab connector

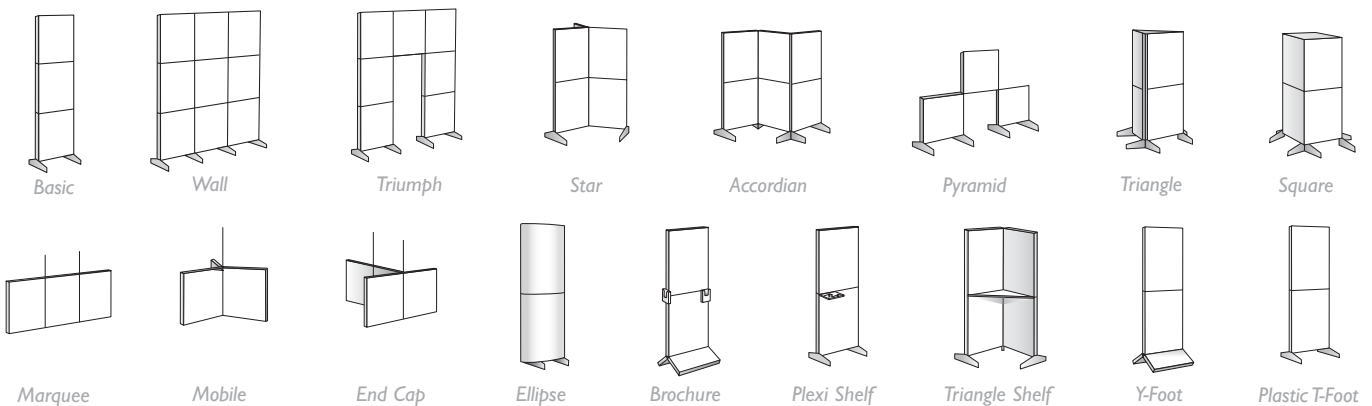


E top connector

3x3 Adbox



CONFIGURATION SAMPLES:



ADBOX[®]

ELLIPSE.WALL.
BIG OR SMALL.
ADBOX. SIMPLY VERSATILE.





The most versatile display concept in the world is also cost-effective, especially at high volumes. Major audience impact. Flexibility. Cost-effectiveness. It's easy to start something big.

Adbox folds together with no tools and assembles in a snap. It's "goof-proof". And that's smart.



Call for the complete Adbox Information package.